

See discussions, stats, and author profiles for this publication at: <https://www.researchgate.net/publication/345906373>

# Tropical drought risk: estimates combining gridded vulnerability and hazard data

Preprint · November 2020

DOI: 10.5194/nhess-2020-360

CITATIONS

0

READS

301

10 authors, including:



**Alexandra Nauditt**

Technische Hochschule Köln

36 PUBLICATIONS 336 CITATIONS

SEE PROFILE



**Erasmo Alfredo Rodriguez**

National University of Colombia

72 PUBLICATIONS 653 CITATIONS

SEE PROFILE



**Christian Birkel**

University of Costa Rica

162 PUBLICATIONS 2,442 CITATIONS

SEE PROFILE



**Rosa Maria Formiga Johnsson**

Rio de Janeiro State University

48 PUBLICATIONS 287 CITATIONS

SEE PROFILE

Some of the authors of this publication are also working on these related projects:



LUCCI - Land Use and Climate Change Interactions in Central Vietnam [View project](#)



2017-2019: Ministry of Science, Technology, and Telecommunications: Observed climate change effects on the water availability within the Chorotega region [View project](#)



## Tropical drought risk: estimates combining gridded vulnerability and hazard data

Alexandra Nauditt<sup>1</sup>, Kerstin Stahl<sup>2</sup>, Erasmo Rodríguez<sup>3</sup>, Christian Birkel<sup>4</sup>, Rosa Maria Formiga-Johnsson<sup>5</sup>, Kallio Marko<sup>6</sup>, Hamish Hann<sup>1</sup>, Lars Ribbe<sup>1</sup>, Oscar M. Baez-Villanueva<sup>1,7</sup>, Joschka Thurner<sup>1</sup>

<sup>1</sup> Institute for Technology and Resources Management in the Tropics and Subtropics, Cologne Technical University of Applied Sciences, Germany

<sup>2</sup> Chair of Environmental Hydrological Systems, University of Freiburg, Germany

<sup>3</sup> Civil and Agricultural Engineering Department, Universidad Nacional de Colombia – Bogotá, Colombia

<sup>4</sup> Department of Geography, University of Costa Rica

<sup>5</sup> Department of Environmental and Sanitary Engineering, State University of Rio de Janeiro (UERJ), Brazil

<sup>6</sup> Department of Built Environment, Aalto University, Finland

<sup>7</sup> Faculty of Spatial Planning, TU Dortmund, Germany

*Correspondence to:* Alexandra Nauditt, alexandra.nauditt@th-koeln.de

### Abstract.

Droughts are causing severe damages to water abundant tropical countries worldwide. Their resilience to water shortages tends to be low, often due to a lack of water infrastructure. Moreover, drought characteristics and risk in tropical catchments are poorly understood, which makes it difficult to select adequate adaptation measures. Thus, reliable methodologies to evaluate spatially distributed drought risk in data scarce tropical catchments are urgently needed.

We combined drought hazard and vulnerability related information to assess drought risk in four rural tropical study regions, the Muriaé, subcatchment of the Paraíba do Sul in Southeast Brazil, the Tempisque-Bebedero basin in North Costa Rica, the upper part of the Magdalena basin, Colombia and the Srepok, a Mekong tributary shared by Cambodia and Vietnam. Drought hazard was defined based on three variables, daily river discharge and precipitation and vegetation condition. Conditions below defined thresholds were transformed into a cumulative drought index. To assess vulnerability, we reclassified and weighted globally and regionally available gridded socioeconomic data to represent the potential of a drought to cause damages in selected socioeconomic sectors of rural tropical regions. Besides illustrating the relative severity of each indicator value, we developed drought risk maps combining hazard and vulnerability severity for each grid cell.

While for the Muriaé our results clearly identified the downstream area as being exposed to severe drought risk, the Tempisque showed highest risk along the major streams and related irrigation systems. Risk hotspots in the Upper Magdalena were found in the central valley and the dryer Southeast and in the Srepok



35 in the agricultural areas of Vietnam and downstream in Cambodia. Plausibility of results was confirmed by  
local scientists and stakeholders, who evaluated the results for each indicator and risk hotspot. The  
presented risk assessment methodology for data scarce and rural tropical areas offers a holistic, science  
based and innovative solution to provide relevant drought related information. Being applied to individual  
catchments, the findings described in this article will enable the selection of data sets, indices and their  
classification - depending on basin size, spatial resolution and seasonality. At its current stage, the outcomes  
40 of this study provide relevant information for regional planners and water managers dealing with the control  
of future drought disasters in tropical regions.

## 1 Introduction

Droughts are a recurrent phenomenon in tropical regions worldwide (Adamson and Bird, 2010; Erfanian et  
al., 2017) and are expected to become more severe in the future (Sheffield et al., 2018). Recent drought  
45 disasters occurred in South-East Brazil, January 2014 to December 2015 (Nauditt et al., 2019b; Ribbe et al.,  
2018), followed by an El Niño triggered drought in 2015-2016 affecting Costa Rica (Herrera and Ault, 2017),  
Colombia (FAO, 2017) and Southeast Asia (Thirumalai et al., 2017), with devastating implications for  
domestic water supply, agricultural and hydropower production, navigation, fire occurrence and public health  
(Hoyos et al., 2017). Rural areas that rely on rain-fed agriculture, livestock and milk production, were  
50 extremely impacted due to the lack of water storage or distribution infrastructure (Nauditt et al., 2019a). To  
avoid such economic losses during future drought events, the respective governments have been seeking  
for more effective adaptation strategies (IDEAM et al., 2014; Emater-RIO et al. 2016; FAO, 2017; UNGRD  
et al., 2018). Decisions related to drought adaptation, though, need to rely on a profound knowledge about  
drought hazard, vulnerability and exposure; spatially varying risk information that is rarely available in data  
55 scarce tropical regions.

Many concepts have been developed to evaluate drought risk (Carrão et al., 2016; Stahl et al., 2016; Vogt  
et al., 2018; Naumann et al., 2019; Meza et al., 2019), varying in their definition and interpretation of the  
terms “risk”, “hazard”, “vulnerability” and “exposure” (González-Tánago et al., 2015). Nonetheless, although  
60 varying in terminology, there is a wide agreement that risk cannot be understood by looking only at either  
climate anomalies or only at socioeconomic vulnerability factors (UN-ISDR, 2009; Bachmair et al., 2017).  
Understanding risk requires a more holistic evaluation of different conditions leading to drought disasters:  
What extent and duration of a hydro-climatic deficiency caused drought impacts at which location? How did  
the catchment, vegetation and discharge respond to this extreme event? Which environmental and economic



65 sectors were affected? Since such characteristics are climate, region- and sector specific, there is a demand  
to design locally suitable drought risk assessment approaches and related data sets (Naumann et al., 2019).

The scale of analysis matters. Widely applied monthly scale standardized indices (eg. SPI 12) are useful for  
large scale drought risk assessment (Naumann et al., 2018; Vogt et al., 2018). Tropical climates are often  
70 dominated by a strong seasonality and a topography-influenced spatial rainfall variability. Few days without  
rainfall might lead to a severe precipitation deficit that can affect cattle grazing and rain-fed agricultural  
production. Indices based on monthly hydro-meteorological values might not detect short-term deficits in  
quickly responding catchments. For tropical regions, it has therefore been proven useful to assess  
meteorological and hydrological drought hazard at a daily timescale (Nauditt et al., 2017; Firoz et al., 2018).  
75 Also the spatial distribution and coverage of hydro-climatic observations used to detect drought anomalies  
are of key importance for hazard assessment. During drought, topography, geology, soil and land-cover  
catchment characteristics as well as human water interventions influence hydrological processes, catchment  
storage and release and therefore play a major role in the evolution of low flows (Bruijnzeel, 2004; Calder et  
al., 2007; Birkel et al., 2012; Stoelzle et al., 2014; van Loon and Laaha, 2015; Van Loon et al., 2016).  
80 Altogether these influences cause a strong variability of climatic and hydrological drought hazard in tropical  
space (Nauditt et al., 2019b).

Daily time step data, needed to effectively evaluate drought hazard in tropical catchments, are rarely  
available. Sheffield et al. (2018) highlight the potential of satellite remote sensing and reanalysis data  
85 products to improve water resources management in regions with sparse in-situ monitoring networks. Open  
access high resolution remote sensing data products are continuously increasing in quantity (AghaKouchak  
et al., 2015; Mariano et al., 2018). In this context, a variety of gridded datasets are available, including daily  
precipitation (Funk et al., 2015; Baez-Villanueva et al., 2018&2020), surface water (Beck et al., 2016),  
groundwater (Thomas et al., 2014), reservoirs (AghaKouchak et al., 2018), soil moisture (Samaniego et al.,  
90 2018; Tjiedeman and Menzel, 2020), and vegetation (Pinzón and Tucker, 2014; Nguyen et al., 2019).  
Especially vegetation condition indices like fAPAR, NDVI, EVI and VCI play an increasing role for drought  
monitoring and research in data scarce regions. They can provide spatially distributed information on soil  
and vegetation moisture anomalies on the ground (Heydari et al., 2018; Recuero et al., 2019) that is not  
dependent on sparsely monitored hydro-climatic data.

95



100 Exposure and vulnerability information are also sparse, especially in rural tropical regions. Vulnerability  
evaluation should be ideally based on historical drought impact data (Stahl et al., 2016; Bachmair et al.,  
2016; Blauhut et al., 2016), but these are usually not systematically monitored and recorded; rare examples  
being the US Drought Impact Reporter (droughtreporter.unl.edu) , the European Drought Impact Database  
105 (Stahl et al., 2016) or observer-based systems such as the Czech INTERSUCHO (www.intersucho.cz).  
Alternatively, vulnerability data is often replaced by exposure related information (Carrão et al., 2016;  
Naumann et al., 2018; Vogt et al., 2018; Naumann et al., 2019), that is available as gridded socioeconomic  
data sets showing the spatial distribution of population-, livestock- and crop densities as well as socio-  
economic, demographic and infrastructural characteristics. Such remote sensing and gridded data-based  
110 drought risk assessment approaches have often been carried out at global or regional scale (Carrão et al.,  
2016; Hagenlocher et al., 2019), but have rarely been applied to local and catchment scale drought risk. This  
study evaluates the performance of gridded datasets related to hydro-climatic and socio-economic  
information to derive relevant drought risk information for catchments of different sizes (between 5 450 and  
49 382 km<sup>2</sup>) and differing tropical climates.

110 In line with the above, **the overall aim** of this study is to identify and characterize drought risk hotspots in  
rural and data scarce tropical regions as a basis for drought management.

**Specific objectives:**

- 115
- to identify the spatially distributed cumulative duration of hydrological and meteorological drought hazard
  - to understand spatially varying and sector related drought vulnerability
  - to visualize spatial distribution of drought risk in four tropical catchments that vary in size, topography,  
climate and water infrastructure development
  - to attribute the relative spatial contribution of hazard and vulnerability related factors to drought risk

120

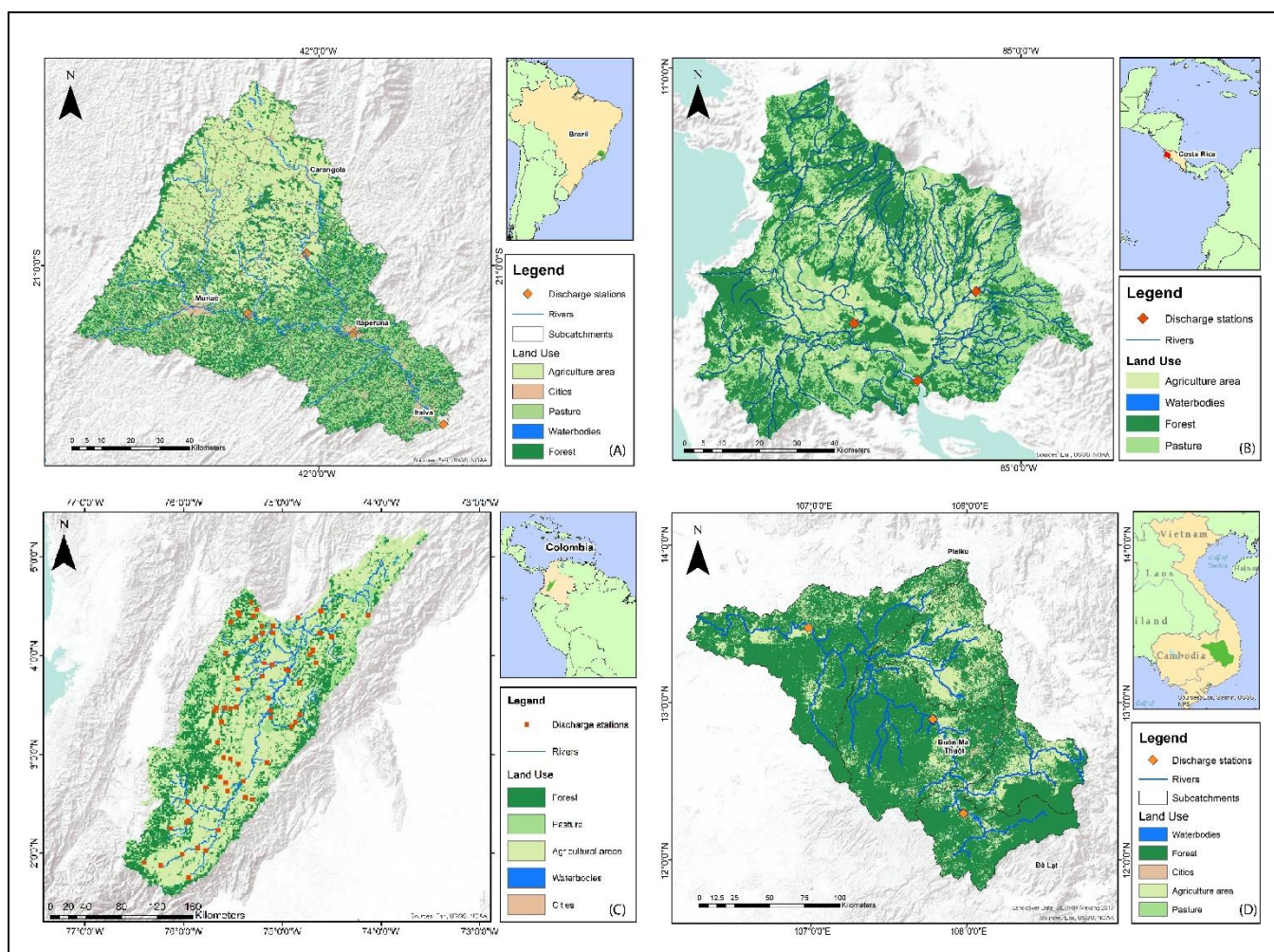




## 2 Data and Methods

### 2.1 Study regions

We selected four rural catchments in tropical regions that were affected by severe drought disasters during the last decade. Figure 1 gives an overview on the characteristics of the four *study regions*, each differing in size, topography seasonality and level of human intervention.



**Figure 1.** Study regions: river network, discharge stations, major land uses and urban areas of the (A) Muriaé, subbasin of the Paraíba do Sul in South Eastern Brazil, (B) the Tempisque basin in North Costa Rica, (C) the Upper Magdalena basin in Colombia and (D) the Srepok basin in the Lower Mekong shared by Cambodia and Vietnam.



**Table 1: Catchment characteristics of the four study regions**

	<b>The Muriaé catchment (Paraíba do Sul River Basin), South Eastern Brazil</b>	<b>The Tempisque-Bebedero catchment, Costa Rica</b>	<b>The Upper Magdalena basin, Colombia</b>	<b>The Srepok basin, Lower Mekong (Cambodia and Vietnam)</b>
<b>Size:</b>	7 220 km <sup>2</sup>	5 455 km <sup>2</sup>	49 382 km <sup>2</sup>	30 900 km <sup>2</sup>
<b>Elevation:</b>	10 to 2 000 m.a.sl.	0 to 1 916 m.a.sl.	222 to 3 685 m.a.sl.	66 to 2 283 m.a.sl.
<b>Precipitation:</b>	1 000–2 000 mm.	1 000–3 000 mm.	2 500–3 000 mm	1 569–2 800 mm
<b>Mean annual discharge:</b>	118 m <sup>3</sup> /s.	Tempisque 27 m <sup>3</sup> /s; Bebedero 10 m <sup>3</sup> /s.	1 330 m <sup>3</sup> /s.	634.2 m <sup>3</sup> /s. (Constable, 2015)
<b>Total population:</b>	ca. 100 000 inhabitants	ca 382 900 inhabitants.	ca. 1.5 inhabitants	ca. 2.9 million inhabitants
<b>Climate:</b> (Peel et al., 2007)	Tropical savanna climate (Aw), dry-winter humid subtropical climate (Cwa) and Dry-winter subtropical highland climate (Cwb).	Tropical savanna climate (Aw).	Tropical rainforest climate (Af), tropical monsoon climate (Am), oceanic climate (Cfb), and tropical savanna climate (Aw).	Tropical savanna climate (Aw) and tropical monsoon climate (Am).
<b>Major land uses:</b> (Arino et al., 2012)	68.3 % pasture, 24.1 % forest, 7 % agriculture and 0.6 % urban.	17 % pasture, 5 % forest, 76 % agriculture and 2 % urban.	38 % agricultural area, 51 % forest, 9 % pasture and 1 % urban areas.	40 % pasture, 34.5 % forest, 24.9 % agriculture and 1 % urban.

## 2.2 Data

### Discharge data set: Hydrostreamer

135 Available discharge observations data in the study regions (Figure 1) do not allow to display the spatial  
 variability in hydrological behaviour. We applied a recently developed downscaling tool, Hydrostreamer  
 (Kallio, 2020) to the spatially coarse global discharge data product from the ISIMIP 2a (Gosling et al., 2017)  
 experiment. Downscaling is carried out by areal interpolation, where the source runoff data are distributed to  
 intersecting higher-resolution catchments, routed downstream, and optimized against observed streamflow  
 140 (see detailed description in Kallio et al., 2019&2020. For the Muriaé catchment, SWAT2012 modelling  
 (Neitsch et al., 2011) provided 93 simulated discharges used for optimization (Nauditt et al., 2019b).  
 We requested available daily discharge observations for the optimization of the Hydrostreamer results. For  
 the Muriaé, five daily discharge time series were obtained by the National Water Agency of Brazil (ANA,



145 2019; Nauditt et al., 2019a; Nauditt et al., 2019b). For the Tempisque, data from two discharge stations were  
acquired by the Hydrological Department of the Electricity Institute of Costa Rica ICE (2019) 1980-2003 and  
for the period 2003-2018 by the Institute for Aqueducts and Sanitation (AYA, 2019). For the Upper  
Magdalena, we obtained daily time series from 46 discharge stations from IDEAM (2019) and for the Srepok,  
daily data from three discharge stations (Kallio et al., 2019; Kallio, 2020; MRC, 2018) were acquired.

### Precipitation

150 Station data that were used to validate the satellite based precipitation estimates for the Magdalena and the  
Muriaé are described in Baez-Villanueva et al. (2018), for the Srepok in Dandridge et al. (2019) and for the  
Tempisque in Venegas-Cordero et al. (2020). We selected the gridded 0.05° x 0.05° resolution daily  
precipitation dataset CHIRPS v2.0 (Funk et al., 2015) for the period 1980-2018 after evaluating different  
satellite based precipitation data sets in a point to pixel analysis (Baez-Villanueva et al., 2018; Dandridge et  
155 al, 2019) and in hydrological modelling (Nauditt et al., 2019b).  
CHIRPS v2.0 showed good goodness-of-fit (GOF) performance in point to pixel evaluation and HBV rainfall  
runoff modelling (Baez-Villanueva et al., 2018; Nauditt et al., 2019b; Venegas-Cordero et al., 2020).  
Additionally, CHIRPS v2.0 covers the longest time period (1981 to date) and has a higher spatial resolution  
compared to other available satellite based precipitation estimates products.

### 160 Vegetation Condition

To understand the spatial variation of drought related vegetation condition, we used MODIS MOD13Q13  
(2000-2017) 16-day composite NDVI imagery at 250 m resolution. We identified the driest month in record  
using the Standardized Precipitation Index (SPI) (McKee et al., 1993) applied to the satellite based  
precipitation raster data set CHIRPS v2.0 (1980-2017) (Nauditt et al., 2019b).

165





## Vulnerability

We evaluated gridded data sets in terms of their suitability to represent vulnerability and selected the following data sets available for all our study regions:

**Table 2: Vulnerability (Exposure) data sets**

Data set	Vulnerability Indicator	Source
Gridded Livestock of the World (GLW)	livestock density	(Robinson et al., 2014)
Global Agricultural Lands 2000	cropland density	(Ramankutty et al., 2008)
GHS Population Grid 2015	population density	(CIESIN, 1997-2020)
Major roads 2013	proximity to infrastructure	(CIESIN, 1997-2020)
Global GDP PPP/HDI 2011	GDP	(Kummu et al., 2018)



### 2.3 Drought Risk Assessment

**Figure 2** illustrates the overall methodology applied in this study. We evaluate drought risk as a combination of hazard and vulnerability:

$$dr_i = \frac{dh_i + dv_i}{2} \quad (1)$$

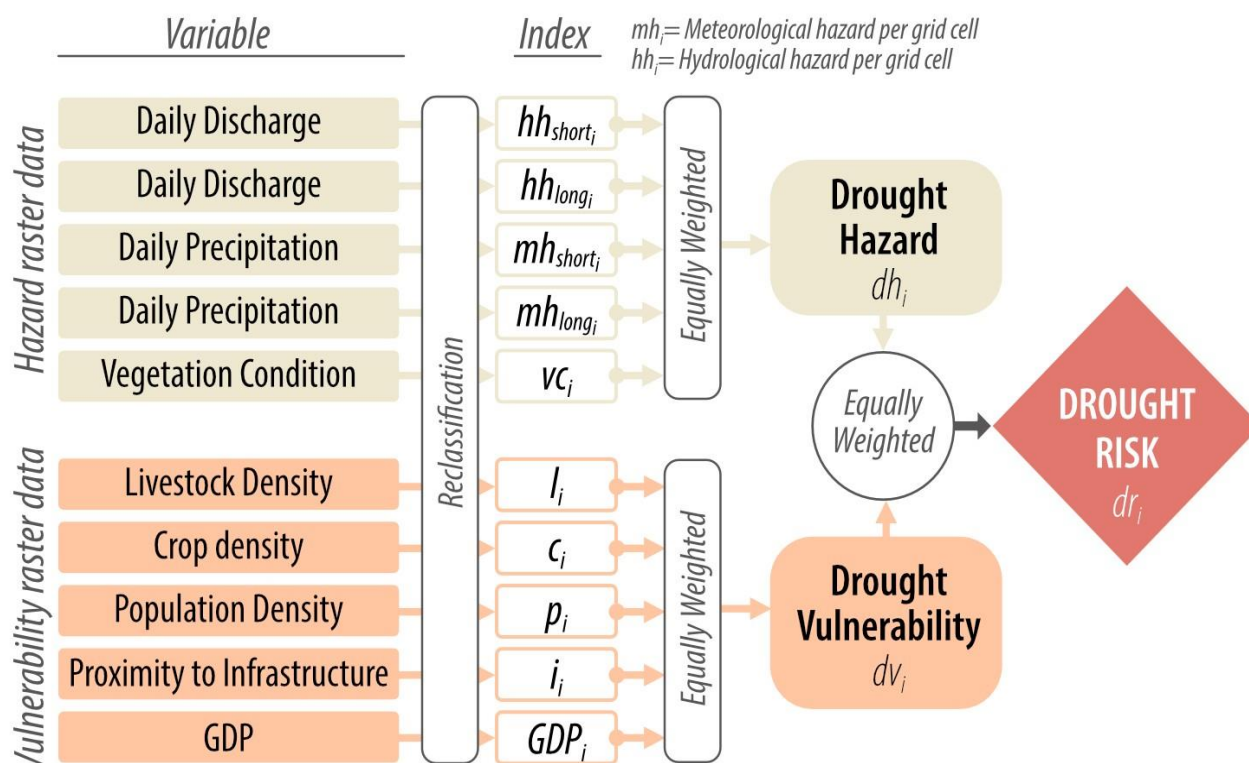
175

Where  $dr$  represents drought risk,  $dh$  drought hazard,  $dv$  drought vulnerability and  $i$  grid cell.

Hazard ( $dh_i$ ) is defined by drought in meteorological, hydrological and vegetation condition indices. Vulnerability ( $dv_i$ ) is defined as the potential of a drought to cause damages in selected socioeconomic sectors using typical exposure information.

180

We used two groups of variables (hydro-climatic and socio-economic) and calculated index values for each grid cell ( $i$ ) for each variable. All layers were resampled to a spatial resolution of 30 m and equally weighted to obtain maps for each index, hazard, vulnerability and risk. Drought risk maps were then produced by equally weighting the hazard and vulnerability layers. More details about the methodological process are given in sections 2.3.1 and 2.3.2.



185 **Figure 2.** Overall methodology (for variable and index descriptions see sections 2.3.1 and 2.3.2)

### 2.3.1 Drought Hazard

To obtain daily scale **hydrological drought** signals, we applied the widely used threshold method (e.g. Tallaksen, 2000) using a daily varying  $Q_{95}$  threshold (Fleig et al., 2006; WMO, 2008). We selected the period 1981-2018 that corresponds to the record length of CHIRPS v2.0 data. We defined more or equal than 12 days below a daily varying  $Q_{95}$  threshold as a **long** hydrological tropical drought event ( $hh_{long}$ ) and 5-11 days below that threshold as a **short** hydrological tropical drought event ( $hh_{short}$ ). We used pooling to remove single days when streamflow went above the threshold by less than 20 %. Resulting short and long hydrological drought indices ( $hh_i$ ) were derived as the cumulative drought duration of events for each grid cell. So ( $hh_{short_i}$ ) is the sum of all short-duration (5-11 days) events and ( $hh_{long_i}$ ) is the sum of long-duration (>=12 days) events. The cumulative duration of detected events was classified into five severity categories (Sc). More than 75 short drought events during the period of 37 years were classified as the most severe



short drought hazard and more than 50 events with more or equal than 12 days below  $Q_{95}$  were considered the most severe long drought hazard ( $Sc_5$ ) (Table 3).

200 The **meteorological drought** index ( $mh_i$ ) evaluates the cumulative drought duration of precipitation drought events. To represent long and short meteorological drought events in tropical regions, we defined two classes of drought intensity for precipitation deficits:  $\geq 20$  days with rainfall below 0.3 mm as a long meteorological drought: ( $mh_{long}$ ) and 5-19 days as a short meteorological drought: ( $mh_{short}$ ) with rainfall below 0.3 mm. The number of detected events were classified into 5 severity categories (Table 3)

205 The **vegetation condition** related drought hazard  $vc$  is represented by the vegetation condition in the driest month in record. We identified the driest month in record using the SPI. To understand the spatial variation of vegetation condition, we used the Vegetation Condition Index (VCI) (Dutta et al., 2016; Kogan, 1995; Quiring and Ganesh, 2010) applied to NDVI imagery. The vegetation related drought index ( $vc_i$ ) was established by inversely rating VCI values for each pixel. In contrast to the hydrological and meteorological indices,  $vc_i$  has a negative correlation with drought severity. Values between 50 % and 100 % indicate 210 moisture rich vegetation conditions, values between 50 % and 35 % short drought conditions and values below 35 % long drought conditions (Kogan, 1995). The detailed methodology is described in Nauditt et al., 2019b. VCI percentage values were classified into five severity categories (Table 3).

The overall drought hazard ( $dh$ ) for each grid cell ( $i$ ) is calculated by the equally weighted severity class ( $Sc$ ) values (Table 3) of each hazard index as:

215

$$dh_i = \frac{Sc(hh_{short_i}) + Sc(hh_{long_i}) + Sc(mh_{short_i}) + Sc(mh_{long_i}) + Sc(vc_i)}{5} \quad (2)$$

Where  $dh$  is the drought hazard,  $i$  the location (grid cell) and  $Sc$  the severity class.  $hh_{short_i}$  represents the cumulative duration of short hydrological drought events based on number of events,  $hh_{long_i}$  the cumulative 220 duration of long hydrological drought events,  $mh_{short_i}$  the cumulative duration of short meteorological drought events,  $mh_{long_i}$  the cumulative duration of long hydrological drought events and  $vc_i$  the vegetation condition related hazard (Table 3).



**Table 3 Hazard indices, their severity classification and allocation to five severity classes ( $S_c$ ):**

	$hh_{short_i}$	$hh_{long_i}$	$mh_{short_i}$	$mh_{long_i}$	$vc_i$
<b>Drought Hazard Index</b>	Number of drought events with 5-11 days below $Q_{95}$ daily variable threshold	Number of drought events with $\geq 12$ days below $Q_{95}$ daily variable threshold	Number of drought events with 5-19 days below 0.3 mm of precipitation	Number of drought events with $\geq 20$ days below 0.3 mm of precipitation	Vegetation Condition Index (VCI) value (%) for the driest month in records (SPI12)
<b>Severity class (<math>S_c</math>)</b>	<b>Classification</b>				
<b>1</b>	0-30	0-25	0-30	0-25	> 50
<b>2</b>	30-45	25-32	30-45	25-32	40-50
<b>3</b>	45-60	32-40	45-60	32-40	30-40
<b>4</b>	60-75	40-50	60-75	40-50	20-30
<b>5</b>	> 75	> 50	> 75	> 50	0-20

225

### 2.3.2 Drought Vulnerability

230

We used open access gridded datasets for five socioeconomic exposure related variables to represent spatial drought vulnerability in the four study regions. All datasets were resampled using the nearest neighbor method to account for differences in grid cell resolution. Each data set was reclassified and given a rating based on positive or negative correlation to vulnerability. The overall drought vulnerability  $dv$  for each grid cell  $i$  is calculated by the equally weighted severity class  $S_c$  values (Table 4) of each vulnerability index as:

$$dv_i = \frac{S_c(l_i) + S_c(c_i) + S_c(p_i) + S_c(i_i) + S_c(GDP_i)}{5} \quad (3)$$

235

Where  $dv_i$  is overall drought vulnerability per grid cell,  $S_c$  the severity class,  $l_i$  the livestock density index,  $c_i$  the crop density index,  $p_i$  the population density index,  $i_i$  the index for proximity to infrastructure and  $GDP_i$  the GDP index per grid cell. Table 4 gives an overview on the severity classification for each index.



**Table 4 Vulnerability indices, classification and severity classes**

<b>Vulnerability index</b>	$I_i$ Livestock density (head per km <sup>2</sup> )	$C_i$ Cropland (% area)	$P_i$ Population Density (persons/grid cell)	$I_i$ Proximity to Infrastructure (m)	$GDP_i$ (Million USD PPP per km <sup>2</sup> ) for reference year 2011
<b>Severity class</b>	<b>Classification</b>				
<b>1</b>	0-15	0-0.1	0-50	0-100	>20
<b>2</b>	15-30	0.1-0.2	50-100	100-250	5-20
<b>3</b>	30-40	0.2-0.3	100-250	250-500	2-5
<b>4</b>	40-50	0.3-0.4	250-500	500-1000	1-2
<b>5</b>	>50	>0.4	>500	> 1000	0-1
<b>Correlation</b>	positive	positive	positive	positive	negative

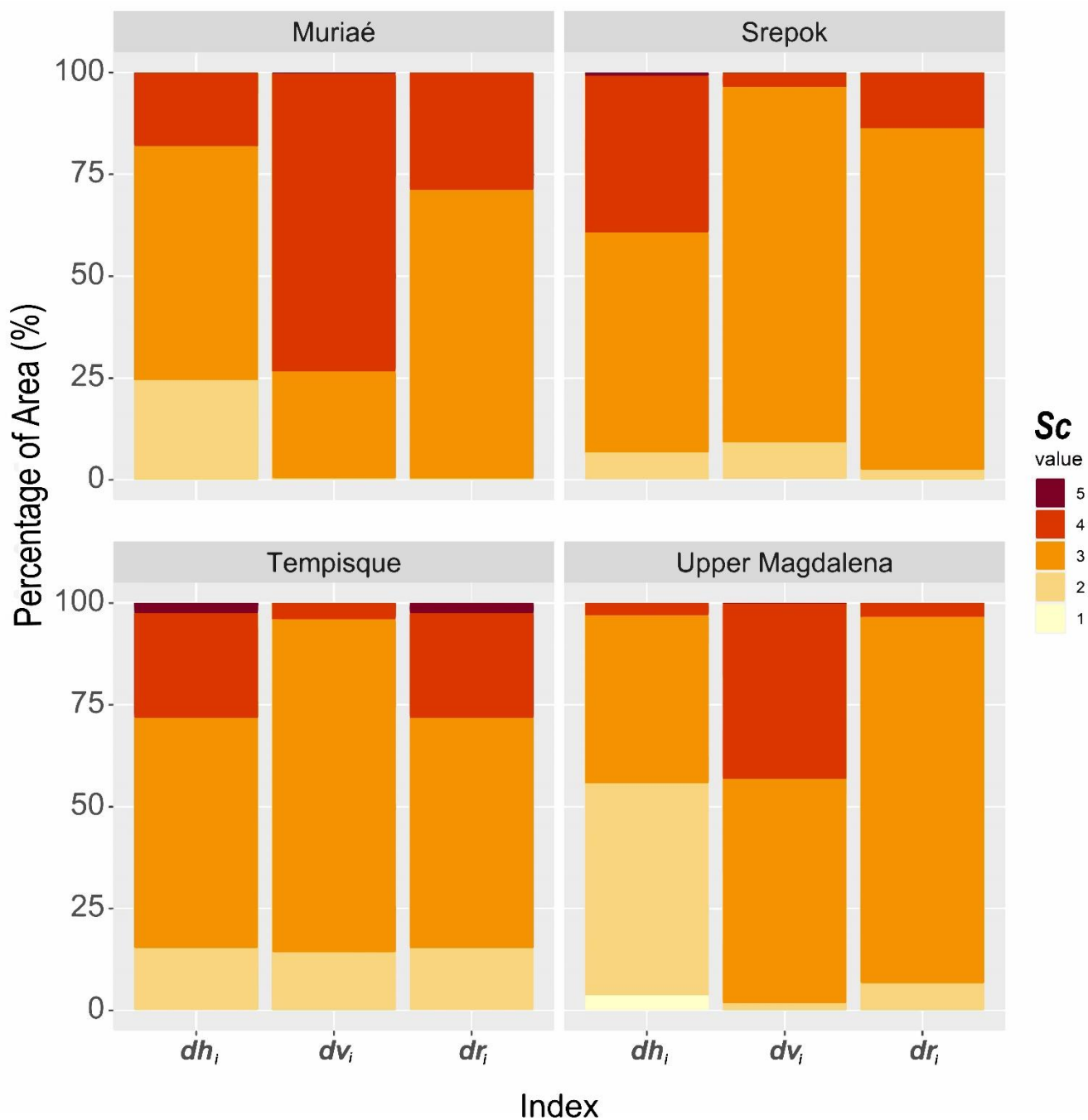
### 3 Results

#### 240 3.1 Drought hazard ( $dh$ ), vulnerability ( $dv$ ) and risk ( $dr$ ) in the four study regions

Figure 3 gives an overview on spatial coverage (% of grid cells) of drought hazard, vulnerability and risk in the four study regions. Due to the equal weighting of the individual hazard and vulnerability severity values, the percentages of basin area in the severity classes 1 and 5 are small. Therefore, Sc 4 can be considered as most severe and Sc 2 as least severe.

245 For the **Muriaé**, results suggest severe vulnerability ( $dv$ ) in most of the area with 73.1 % in Sc 4 and 26.2 % in Sc 3. Hazard ( $dh$ ) was found in Sc 3 with 57.4 % and Sc 2 with 24.4 % of the Muriaé basin. The **Tempisque** showed hazard ( $dh$ ) with 25.7 % of the area in Sc 4, 0.7 % in Sc 5 and 56.5 % in Sc 3, while percentage of area exposed to drought vulnerability ( $dv$ ) is largest in Sc 3 with 81.8 % and 14.2 % in Sc 2. **Upper Magdalena** shows vulnerability ( $dv$ ) with 43.1 % in Sc 4 and 55 % in Sc 3. Results identify hazard ( $dh$ ) with  
 250 most values in Sc 2 with 52 % and 41.3 % in Sc 3. Finally, for the **Srepok**, higher hazard ( $dh$ ) was found compared to  $dv$ , with 38.5 % in Sc 4 and 54 % in Sc 3 of its basin area, while vulnerability is highest in Sc 3 with 87.4 % and 8.9 % in Sc 2 (Figure 3).





**Figure 3** Severity class ( $Sc$ ) distribution per percentage of area for drought hazard ( $dh$ ), vulnerability ( $dv$ ) and risk ( $dr$ ) in the four study regions

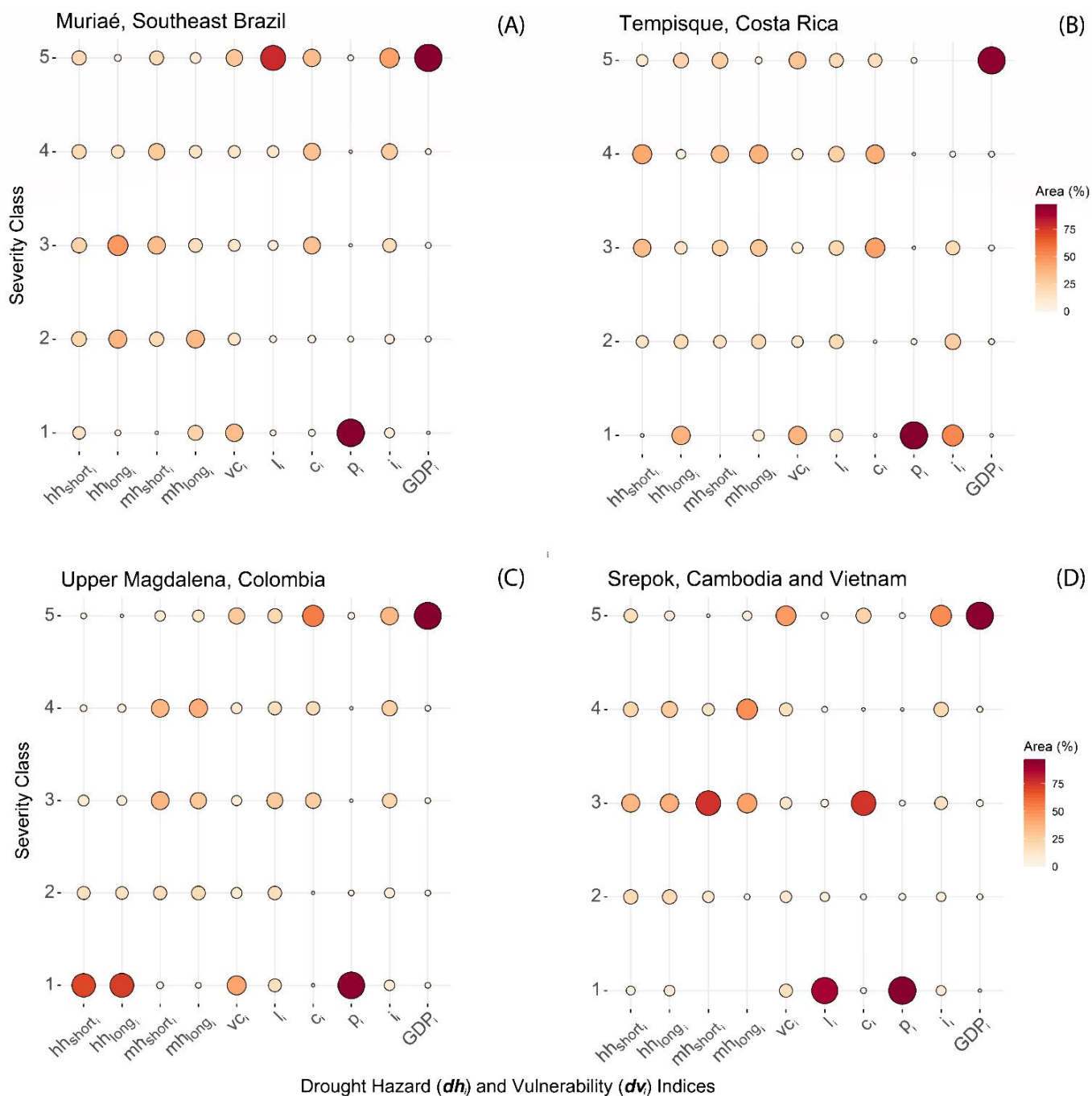


Figure 4 shows balloon plots indicating the percentage of the basin area covered by the severity classes 1-5 for each drought index. All study regions show a high vulnerability related to low GDP (Sc 5) and a low vulnerability (Sc 1) related to population density ( $p_i$ ).

260 For the **Muriaé**, highest severity was found for livestock ( $l_i$ ) (with 78 % in Sc 5) and crop density ( $c_i$ ) (33.2 % in Sc 5 and 31.1 % in Sc 4) as well as for proximity to infrastructure ( $i_i$ ) (43.5 % in Sc 5 and 25.7 % in Sc 4). The remaining indices showed a nearly homogenous distribution across the severity classes.

For the **Tempisque**, results show highest values for short hydrological drought hazard ( $hh_{short_i}$ ) with 42 % of its area in Sc 4 and 10,5 % in Sc 5, for  $mh_{short_i}$  with 33 % of its area in Sc 4 and 26 % in Sc 5 and for

265  $hh_{long_i}$  with 23 % of its area in Sc 5. Lower values were shown for the vulnerability indices  $l_i$  with 25.1 % of area in Sc 4 and 19.1 % in Sc 5 and  $c_i$  (44.2 % of area in Sc 4 and 17 % in Sc 5) (Figure 4).



**Figure 4** Index values distributed to percentage of catchment area in the four study regions



270 For the **Upper Magdalena**, highest severity was found for vulnerability indices crop density ( $c_i$ ) (55.6 % in Sc 5 and 18.1 % in Sc 4), livestock density ( $l_i$ ) (21.4% in Sc 5 and 16.7 % in Sc 4) and proximity to infrastructure (36.2 % in Sc 5 and 24.8 % in Sc 4). Lower values for hazard were found for  $mh_{short_i}$  with 37 % in Sc 3 and 35.8 % in Sc 4, for  $mh_{long_i}$  (11.6 % in Sc 5 and 39.2 % in Sc 4) and very low values for  $hh_{long_i}$  (73.9 % in Sc 1 and 15.4 % in Sc 2) and  $hh_{short_i}$  (71.8 % in Sc 1 and 17.2 % in Sc 2).

275 For the **Srepok**, results show highest values for vegetation condition related condition hazard  $vc_i$  (46.4 % in Sc 5 and 15.9 % in Sc 4), followed by  $mh_{long_i}$  (50.1 % in Sc 4 and 5.8 % in Sc 4). The other hazard indices resulted in values distributed across the Scs. Highest vulnerability was found for proximity to infrastructure ( $i_i$ ) with 51.5 % in Sc 5 and 20.6 % in Sc 4. The remaining vulnerability indices showed low values as for livestock density ( $l_i$ ) 88.2 % in Sc 1 and for crop density ( $c_i$ ) 75.4 % in Sc 3.

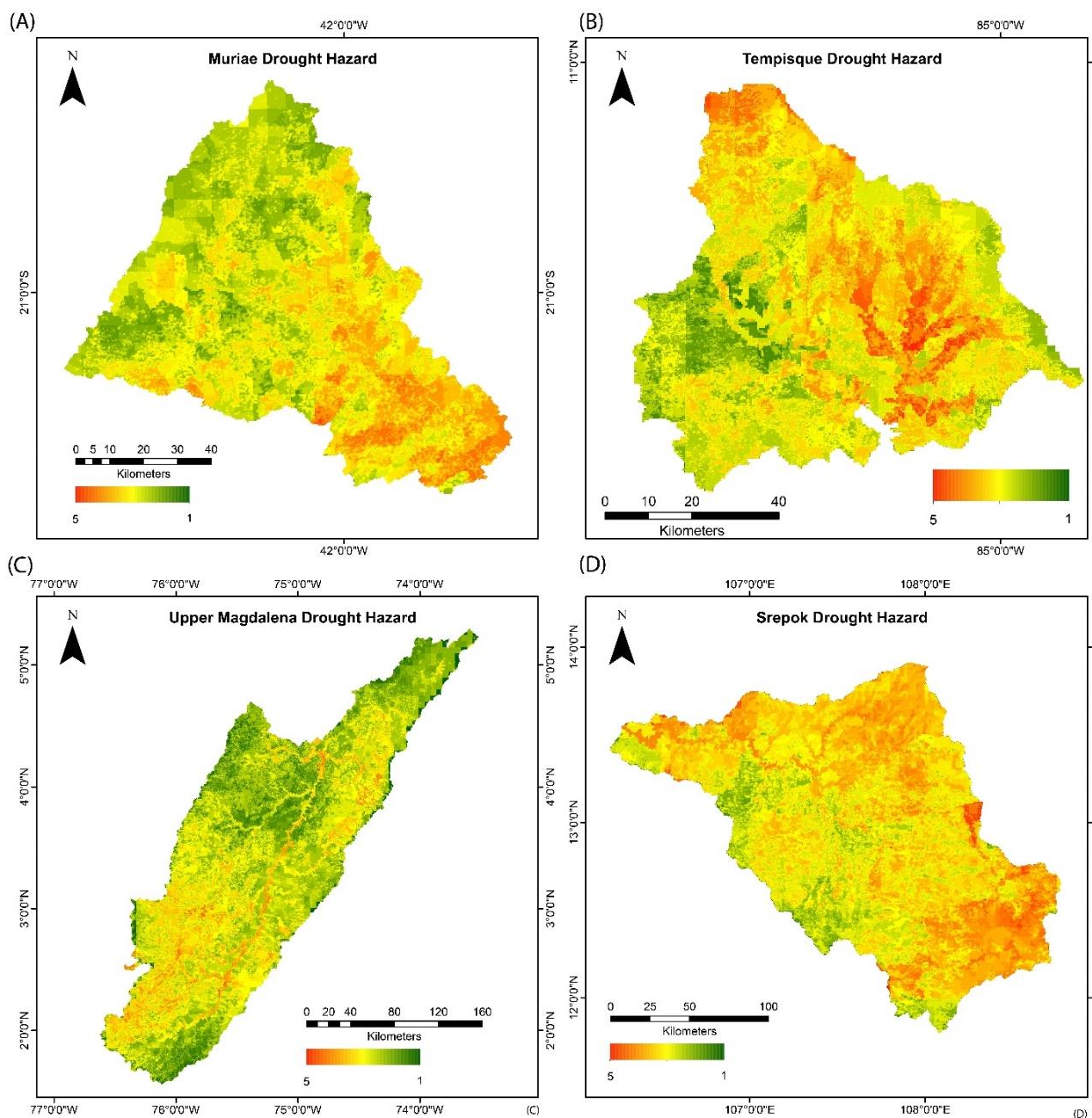
### 3.2 Spatial distribution of drought hazard ( $dh_i$ ) in the four study regions

280 Figure 5 illustrates the weighted drought hazard based on the meteorological, hydrological and vegetation condition-based indices for each grid cell in the four study regions. Red corresponds to Sc 5 and green to Sc 1. For the **Muriae**, drought hazard was found to be highest in the Southwestern downstream part due to the larger share of Sc values for  $hh_{short_i}$ ,  $mh_{long_i}$  and  $vc_i$  (see individual maps in the supplementary material).

285 For the **Tempisque** basin, drought hazard was found to be highest in the downstream part in the North over the river estuary and for the Eastern part along the main Tempisque River stretches and the Bebedero tributary upstream (Figure 5). Duration of periods without rainfall and resulting vegetation moisture loss were stronger in the Eastern part of the basin.

290 For the Southwestern upstream area of the **Upper Magdalena** basin in Colombia, the results show strongest hazard values in the Southeastern upstream part where most meteorological drought periods and also vegetation related anomalies were detected and along the main Magdalena river due to hydrological droughts. For the **Srepok** basin, the strongest hazard values were observed in the Southeastern upstream region over the Vietnamese highlands and the Cambodian North and Northwestern downstream region due to high vegetation condition hazard  $v_i$  and  $hh_{long_i}$  (Figure 5). Detailed results for each layer are given in the supplementary materials.

295



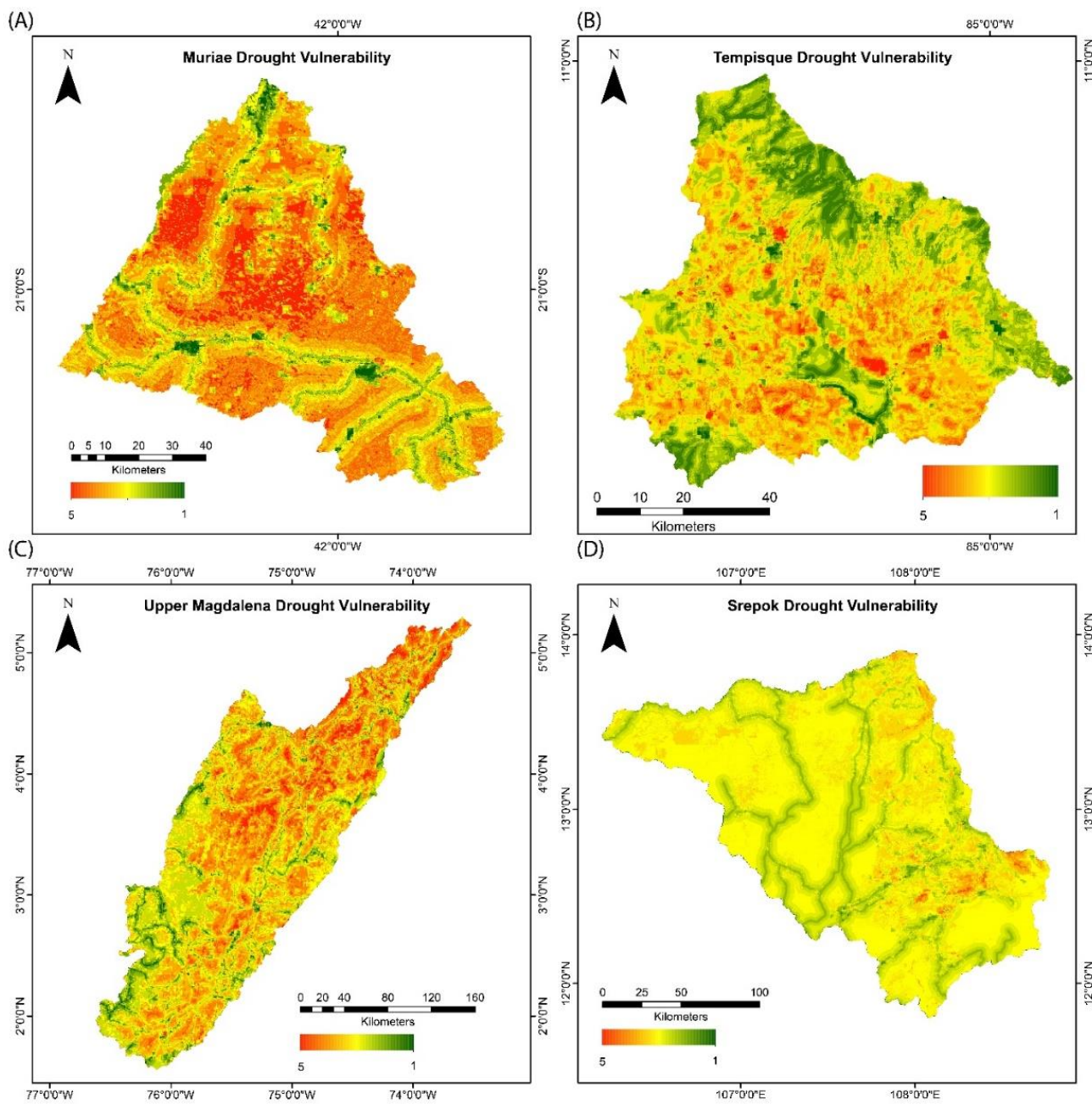
**Figure 5** Spatially distributed drought hazard (*dh*) severity classes found in the four study regions



### 3.3 Spatial distribution of drought vulnerability

Figure 6 shows the spatial distribution of drought vulnerability in the four study regions. For the **Muriaé**, the data evaluation suggests a strong vulnerability all over the region due to high cropland and livestock density, low GDP of the rural population and long distances to infrastructure - except along the major roads where the indicators for crop density and proximity to infrastructure show low values. Results for the **Tempisque** show a high vulnerability almost all over the place as cropland and livestock pasture is strongly developed. Only the protected areas in the forested Northwestern and Central regions show lower vulnerability values. Similarly, for the **Upper Magdalena** drought vulnerability was found almost everywhere, despite the Southwest, where protected areas are located. In the **Srepok**, less vulnerability severity was found, with main regions located in the Vietnamese Southeastern upstream part, the Northeastern Cambodian part and the Northwestern downstream area (Figure 6). Detailed results for each layer are presented in the supplementary materials.



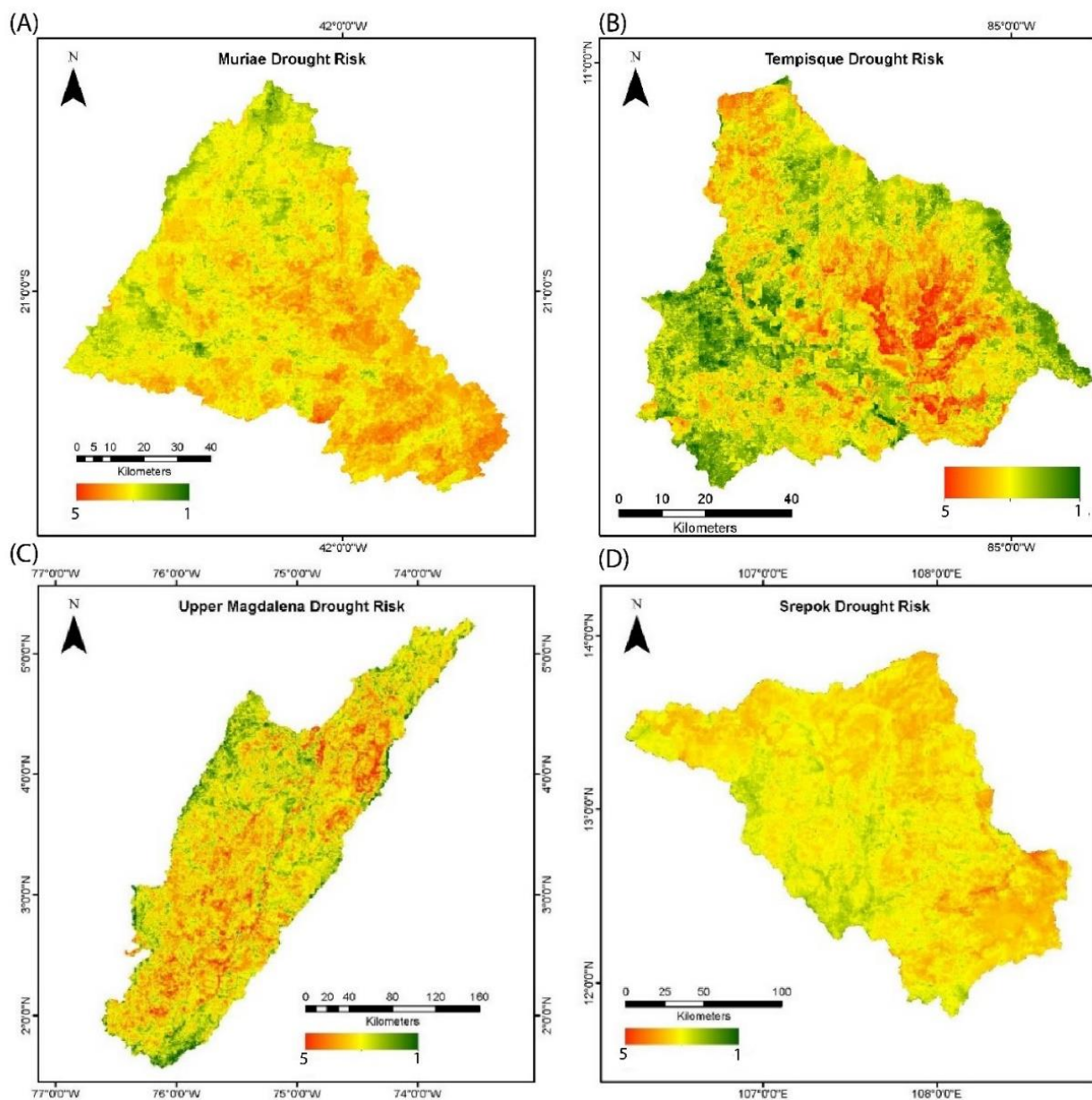


310 **Figure 6** Spatial distribution of drought vulnerability (dv) severity classes in the four study regions



### 3.4 Drought risk

Figure 7 illustrates the spatial distribution of drought risk ( $dr$ ) in the four study regions based on equally weighted hazard and vulnerability severity values.



**Figure 7** Spatial distribution of drought risk ( $dr$ ) severity classes in the four study regions



In all study regions, results show a considerable share of area with drought risk hotspots (with colours from orange to red). While in the **Muriaé**, highest risk was observed in the meteorologically drier downstream part; the **Tempisque** showed the strongest risk in the central-eastern and estuary region, where both hazard and vulnerability values were found to be severe (see individual maps in supplementary materials). For the **Upper Magdalena**, severe drought risk was found in the central Magdalena valley from up- to downstream (Northeast) and in the meteorologically dry Southeastern upstream part. The **Srepok** showed severe risk in the Southeastern Vietnamese upstream region and in the Northern and Eastern central region of Cambodia.

## 4 Discussion

### 4.1 Hazard ( $dh$ ), vulnerability ( $dv$ ) and drought risk ( $dr$ ) in the four study regions - plausibility of identified drought risk hotspots

For the **Muriaé**, plausible results were obtained for the location of drought risk hotspots as well as for the spatial distribution of severe drought hazard and vulnerability. Risk hotspots were found in the downstream area where most economic activities take place and precipitation rates are lower compared to those at higher elevations (CEIVAP, 2015; Nauditt et al., 2019b), along with a higher hydrological hazard also due to fractured geological and alluvial characteristics. Vulnerability is high all over the basin due to intensive livestock grazing and agricultural production as well as low GDP and large distances to road infrastructure. These spatial characteristics for drought hazard, vulnerability and risk were confirmed by collaborating stakeholders of the river basin committee CEIVAP (Comitê de Integração da Bacia Hidrográfica do Rio Paraíba do Sul) and the executive river basin agency AGEVAP (Agência da Bacia do Rio Paraíba do Sul). Additionally, results coincide with field research, modelling and data analysis related to spatial variability of drought occurrence and impacts of involved and affiliated scientists (Nauditt et al., 2019a).

Also the locations of drought risk hotspots in the **Tempisque** were well defined by the analysis. Hotspots were found in the Northwestern downstream part in the river estuary and in the Southeastern part along the main river stretches and the Bebedero tributary upstream. These regions show high values for both, hazard and vulnerability. Hazard is high due to human abstractions along the streams and irrigated areas and due to longer periods without rainfall and resulting vegetation moisture loss in the Eastern part of the basin. Risk hotspots (Figure 7) are found where this hazard is combined with highest vulnerability due to highest crop and livestock density. Lower  $dr$  values were found in the Northeast, where vulnerability is low in larger



345 National Parks. The results are in agreement with information of the Water Agency of Costa Rica DA (Dirección de Agua de Costa Rica) and the team of the PIAAG Program (Programa Integral de Abastecimiento de Agua para Guanacaste – Pacífico Norte) that aims at securing the water supply to the Tempisque Bebedero region (Dirección de Agua, 2018). These findings are supported by comprehensive (field) research in the drought prone study region on topics related to meteorological and hydrological droughts, water scarcity and vegetation susceptibility to droughts (Muñoz Jiménez et al., 2019).

350 For the **Upper Magdalena Basin** in Colombia, drought risk hotspots were found in the Northeastern downstream part, all over the Magdalena valley and in the Southwestern upstream area (Figure 7). While agricultural activities and related water abstractions increase both vulnerability and hydrological hazard in the central valley, the risk hotspots in the upstream can be explained by strong meteorological hazard in the Southwest, which is drier and where most meteorological drought periods and vegetation related anomalies were detected. Hydrological droughts in the main stream are most probably aggravated by hydropower  
355 operation and abstractions for rice irrigation (Vega-Viviescas and Rodriguez, 2019). However, in total terms, the Upper Magdalena shows low total hazard per percentage of area with most values in Severity Class 2 (52 %). This can be explained mainly by the few grid cells affected by strong hydrological hazard along the major streams of the Magdalena. Vulnerability in the Magdalena was found to be more relevant compared to hazard with 43.1 % in Sc 4 and 55 % in Sc 3. This coincides with the spatial distribution of main areas of  
360 crop, livestock and population density in the Magdalena valleys and lower lying areas, as confirmed by scientists at Universidad Nacional de Colombia with vast research experience in the study region as well as by stakeholders as the Colombian Agency for Hydrology and Meteorology IDEAM and the Magdalena Basin Agency Cormagdalena.

365 Drought risk hotspots were also well detected in the **Srepok** basin, with main locations observed in the Southeastern upstream region over the Vietnamese highlands and the Cambodian North and Northwestern downstream region. High risk values depended mainly on high vegetation condition hazard ( $v_i$ ) and hydrological hazard  $hh_{short}$  and  $hh_{long}$  that is dominating in the upstream area where reservoirs are located and along the downstream rivers, from where abstractions are used for irrigated rice in Cambodia (Bui Du,  
370 2018; Constable, 2015). Vulnerability is lower compared to the other study regions, as approximately 50 % of the basin is covered with forest and due to the absence of livestock. Higher values for  $dv$  are only found in the Northwestern region, where agricultural land in Vietnam is cultivated with cash crops, mainly coffee (DaLat), rubber, cashew, black pepper and fruit trees for domestic and export markets (CCAFS-SEA). Results were confirmed by scientist of Aalto University with years of research experience in the region, as





375 well as by collaborating institutions (Ministry of Environment of Vietnam, MONRE and Water Management  
Institute NAWAPI).

## 4.2 Drought hazard assessment

In the **Muriaé**, severe hydrological hazard  $hh_{short_i}$  was found in the Northeastern agricultural upstream area,  
along the streams and at the river basin outlet with 20 % in Sc 5 and another 20% in Sc 4. During the long-  
380 term drought in 2014-2015, the river stretch near the catchment outlet station fell dry (Nauditt et al., 2019b;  
Ribbe et al., 2018), with impacts on aquatic and riparian ecosystems and water users. This event was  
aggravated due to the fractured geological and alluvial characteristics of the downstream river bed (Nauditt  
et al., 2019b). Cumulative duration of  $hh_{long_i}$  with 12 or more days however, was only present in 14.1 % of  
area in Sc 4 and 1.8 % in Sc 5 at the aforementioned basin outlet. The Northeastern agricultural upstream  
385 area in Minas Gerais State is prone to  $hh_{short_i}$ , most probably due to smaller catchment areas and fast  
response to rainfall deficits.

Hydrostreamer provided excellent spatially distributed discharge simulations for the Muriaé catchment, as  
validated by station data and SWAT2012 modelling results for 93 stations; very valuable for drought and  
water resources management and planning. In the Southwestern downstream part severe meteorological  
390 hazard (Sc 5) was found for  $mh_{short_i}$ ,  $mh_{long_i}$  for most grid cells. Low values were found for the upstream  
region (Sc1 for most grid cells).  $vc_i$  is following this spatial pattern with low hazard in the upstream and  
hazardous vegetation condition in the downstream area. This shows that not only the magnitude of rainfall  
in the mountainous upstream region (2000 m maximum elevation) was greater (Künne et al., 2018) compared  
to the drier downstream catchment, but also many less events with consecutive days without rainfall  
395 ( $mh_{short_i}$  and  $mh_{long_i}$ ) occurred in the period between 1981 and 2018 (see individual index maps in the  
supplementary materials). Both regions are extremely vulnerable to meteorological droughts: while in the  
upstream part in Minas Gerais rainfed horticulture is dominating, downstream, in Italva, Rio de Janeiro State,  
livestock and milk production is the main economic activity (Fischer et al., 2018).

400 Hydrological drought hazard was found to be most severe along the upper streams of the **Tempisque** from  
which irrigation water is abstracted. This shows that our approach to assess hydrological hazard with a daily  
varying threshold is also suitable for anthropogenically intervened catchments, where human abstractions  
are leading to discharge anomalies – most probably increasing as a response to a meteorological drought.  
23.1 % of the basin area experienced more than 40 long drought events that lasted longer than 12 days ( $Q_{95}$



405 of daily varying discharge and below) and 10.5 % of its area was affected by 60 moderate drought events in  
the time period between 1918 and 2018. This shows the extreme low flows (down to 2.6 m<sup>3</sup>/s at Guardia  
station) the drought prone region is facing. A drought threshold of Q<sub>95</sub> can therefore be considered as too  
low for a stream with a mean annual discharge of 27 m<sup>3</sup>/s in the case of the Guardia Station.

Strong spatial variation in meteorological drought hazard was found for  $mh_{short_i}$  and  $mh_{long_i}$ , with high values  
410 (Sc 5) covering the Eastern part of the basin (Bebedero subcatchment) and values of Sc 1-2 dominating the  
Western region (Tempisque).  $vc_i$ , in contrast, is homogenously distributed all over the basin, probably as the  
NDVI image was taken during a dry anomaly (SPI 12) of a dry season. Although both total annual and dry  
season rainfall (December-May) accounts for similar monthly precipitation values in both regions  
(Bocanegra, 2017), results of our study show a much larger number of both short and long meteorological  
415 drought events in the Eastern Bebedero subcatchment compared to the Tempisque (see individual index  
maps in the supplementary materials).

In the **Upper Magdalena** only few grid-cell values for long and short hydrological hazard were identified  
along the major streams of the Magdalena. Hydrological droughts in the main streams are most probably  
aggravated by hydropower operation and abstractions for rice irrigation (Vega-Viviescas and Rodriguez,  
420 2019). However, in total terms, the Upper Magdalena shows low hydrological hazard per percentage of area  
with most values in Severity Class 2 (52%). This might be due to data uncertainties in the hydrostreamer  
dataset and the underlying observed discharge data (Rodríguez et al., 2020). Hydrostreamer yielded in  
poorer performance compared to the other three study regions.

The Southwestern upstream region showed strongest meteorological hazard (Sc 5) for  $mh_{short_i}$  and  $mh_{long_i}$   
425 followed by the Northeastern downstream part and similar spatial patterns for  $vc_i$ . The Southwestern  
upstream region is exposed to a more marked tropical seasonality with two wet periods (April and May and  
October and November) and two long dry periods (June to October and November to April) (Rodríguez et  
al., 2020) while the lower part of the Magdalena receives more precipitation and is not exposed to such a  
marked seasonality.

430 For the **Srepok** basin, hydrological drought hazard for both  $hh_{long}$  and  $hh_{short}$  was found to be most severe in  
the Vietnamese Southern upstream region in the Vietnamese highlands due to discharge alterations through  
hydropower operation, as well as in the Cambodian North-Central and Northwestern downstream region due  
to abstractions from agricultural activities.





435 Good results for Hydrostreamer downscaling results were obtained for the Srepok, being a study region of  
Kallio et al. (2019 & 2020), providing a valuable discharge data set for water resources modelling,  
management and planning in the transboundary basin and the Mekong region.  
Meteorological hazard was strong with 55.9 % in Scs 4 and 5 for  $mh_{long_i}$ , with all grid cells located in the  
Vietnamese Southeastern upstream part.  $mh_{short_i}$  was only detected in Scs 1-3, indicating that periods  
440 without rainfall of shorter duration during the wet period were less frequent.  $vc_i$ , in contrast, is homogeneously  
distributed all over the basin.

### 4.3 Vulnerability assessment

We applied open access gridded data sets to evaluate their suitability to provide drought vulnerability or  
exposure information for all of the four study regions. For all study regions, our indicator population density  
445 ( $p_i$ ) showed few grid cells with severity values higher than Sc 1 (classified as less than 50 persons per 1 km<sup>2</sup>  
grid cell). This suggests that the classification we chose (Table 4), assuming that >50 persons would  
represent small settlements and agricultural communities in rural regions, might not be adequate. The  
number of persons per km<sup>2</sup> classified as vulnerable could be lower to also detect remote farmers. In contrast,  
low GDP in rural areas showed strongest severity (Sc 5 = < 1 million USD PPP per km<sup>2</sup> for the reference  
450 year 2011) for almost all grid cells in all study regions, outweighing the low  $p_i$  values. We used this  
classification assuming a low GDP for rural agricultural regions; however, our results suggest that higher  
classification values for Sc 1 and Sc 2 in order to display differences in GDP. In most risk studies, several  
exposure and vulnerability indicators are aggregated, regionally masked (Naumann et al., 2014, Carrão et  
al., 2016; Hagenlocher et al., 2019) to show overall vulnerability. Reference values for indicator classification  
455 – at least to our knowledge -- are not available in literature. Generally speaking, a more detailed evaluation  
of gridded socioeconomic data in terms of risk indicator classification, e.g. for tropical agricultural regions  
resulting in reference values would be a valuable contribution to future comparative risk studies.

To evaluate drought exposure and vulnerability of agricultural activities, we tested the data set “Global  
Agricultural Lands in the Year 2000”. The resulting crop density evaluation, similarly as population density,  
460 is mostly distinguishing between grid cells with agriculture and no agricultural use, therefore a low  
classification values were used (Table 4) resulting in a good representation of agricultural exposure in the  
four study regions, as confirmed by affiliated scientists and stakeholders. More detailed local information on  
crop types, eg. distinguishing between perennial cash crops and annuals, irrigated or non-irrigated  
agriculture, could further detail such site-specific exposure information. Similarly for Livestock density related  
465 vulnerability, we used a low number of animals grazing per grid cell to determine the low Scs (Table 4).



Proximity to Infrastructure served as a good proxy for the stage of development of a location. Although drought vulnerability and exposure largely depends on storage infrastructure or irrigation systems, there are no available data sets for the regions addressed in this study. FAO AQUASTAT, for example, provides such data for Africa but not for Latin America and South East Asia. Despite these shortcomings, our overall drought vulnerability index  $dv_i$  showed good results for aggregated vulnerability. The Muriaé had most grid cells in high severity classes (73.1 % in Sc 4) due to its prevailing sectors milk production and agriculture as well as its sparse road infrastructure. For the Tempisque, we found fewer – but well distinguished and located -- grid cells in Sc 4 (81.8 % in Sc 3); because of the existence of large National Parks in the Northeastern part, less cattle grazing and its well-developed road network. The Upper Magdalena, (with 43.1 % in Sc4) showed high  $dv_i$  values in the downstream part mainly due to crop density and infrastructure. Only for the Srepok, less  $dv_i$  was found. This can be attributed to little livestock and crop density and larger forested areas compared to the other study regions.  $dv_i$  was mainly found for the cultivated areas along the streams as in Vietnam (upstream Southeast), irrigated rice areas in the Cambodian Northeast, and in the downstream Northwest.

## 5 Conclusion

Droughts are causing severe damages to water abundant tropical countries worldwide. The implementation of drought adaptation measures at the local scale need to be based on reliable information about spatially distributed drought risk -- that is rarely available in data scarce tropical catchments. We propose a methodology for evaluating and mapping the distribution of drought risk for rural tropical regions, based on the combination of independent indicators of daily data based drought hazard and drought vulnerability.

We evaluated freely available gridded datasets regarding their suitability to assess drought hazard, vulnerability and risk in four differing rural tropical study regions, the Muriaé river basin in South East Brazil, the Tempisque basin in Costa Rica, the upper catchment of the Magdalena river Basin, Colombia and the Srepok basin in Cambodia/Vietnam. We used daily scale meteorological and hydrological gridded data products and indices to evaluate tropical drought hazard, next to vegetation response to long term droughts, as well as vulnerability data related to the major sectors population, agriculture, livestock, infrastructure and GDP that were available for Latin America and South East Asia. Results showed plausible spatial distribution of hazard, vulnerability and risk in the four study regions, as confirmed by local stakeholders, field surveys as well as through research of the authors. The following outcomes can be highlighted:

- The hydrological drought index  $hh_i$ , based on daily time series and a daily varying threshold  $Q_{95}$ , was able to detect hydrological drought hazard in both, pristine and regulated streams, representing both climate and human induced hydrological drought.



- The meteorological drought index  $mh_i$ , based on daily precipitation data and periods of zero rainfall turned out to be suitable for tropical regions as shown by local impacts especially on livestock and rainfed agricultural production;
- 500 - The subindices  $mh_{short_i}$  and  $mh_{long_i}$  and  $hh_{short_i}$  and  $hh_{long_i}$  give insights in the historical frequency of long and short drought events, independent of general seasonal patterns.
- In combination with the above-described findings, the vegetation anomaly response (NDVI/VCI) to long term drought periods (SPI 12) reveals further vegetation, soil and groundwater related hazard, relevant for eg. forest fire related hazard.
- 505 - In light of the data scarcity in many tropical regions, the vulnerability related data sets and indicators related to crop and livestock density as well proximity to infrastructure have an adequate spatial resolution to provide vulnerability information at the local scale.
- The individual hazard and vulnerability indicator results give insights on how the classifications can be further adapted to individual study regions, depending on climate, topography, seasonality and human influence.
- 510 - Drought hazard, vulnerability and risk maps and individual indicator maps provide decision support when selecting and designing drought adaptation measures to avoid future drought impacts.

These findings were discussed with representatives of local universities and public institutions working in the study regions, by looking at each indicator and combined hazard, vulnerability and risk. We recommend the replication of the approach in other tropical regions by using the developed R scripts. A further step will be to make the Tropical Drought Risk Assessment R-Package available on CRAN.

515

Potential modifications to adapt or further develop our approaches are described below. These depend on the location of the study region, basin size, data availability, hydro-climatic seasonality and major socioeconomic uses. Individual indices can be adapted by changing the severity classification (e.g. by increasing or reducing the duration of short and long droughts) or by introducing data sets that are not (yet) available for the regions addressed in this study. Furthermore, locally defined ecological flow and water demand thresholds could feed into a re-definition of local hydrological drought hazard indices. In addition, drought risk scenarios can be developed, helpful to detect potential changes in future drought risk. These could be based on hydro-climatic projections, indicating longer drought periods, or a changing vulnerability based on socioeconomic projections.

520

525

However, in its current composition and design, our approach delivers a plausible representation of spatially distributed drought hazard, vulnerability and risk hotspots in data scarce and rural tropical regions. It offers a holistic, science based and novel solution to generate local drought risk knowledge that can feed into future



drought related research. The outcomes produced are a valuable source of information for regional planners  
530 and water managers that take decisions on infrastructural and drought adaptation measures.

## 6 Code availability

R package is under preparation to be published on GitHub and possibly in Cran, in the meanwhile please  
contact the corresponding author.

## 7 Supplement link

535 Hazard and vulnerability indicator maps

## 8 Author contributions

AN conceived and designed the study and overall methodology, performed the analyses and prepared the  
manuscript. KS contributed to the study design, methodology, manuscript writing and structure. ER, CR and  
RF supported field work, local validation of results and stakeholder communication in terms of research and  
540 information demand to support drought management and validation. KM simulated and evaluated high  
resolution discharge data (hydrostreamer). HH, OB and JT supported methodological setup, R Coding,  
Package for GitHub and Cran and development of illustrations (R Graph Gallery), LR supported and  
accompanied the research by allocating time and financial resources for personnel, travels and field work.  
All authors actively took part in the writing and editing process.

## 545 9 Competing interests

The authors declare that they have no conflict of interest.

## 10 Acknowledgements

Field work scholarships, stakeholder workshops and travelling costs were supported by the CNRD Network  
Project ([www.cnr.info](http://www.cnr.info)) and the Tropiseca project ([https://www.researchgate.net/project/TROPISeca-Multi-  
550 lateral-University-Cooperation-on-the-Management-of-Droughts-in-Tropical-Catchments](https://www.researchgate.net/project/TROPISeca-Multi-lateral-University-Cooperation-on-the-Management-of-Droughts-in-Tropical-Catchments)) funded by the  
German Federal Ministry of International Cooperation (BMZ)/German Academic Exchange Service (DAAD).



## 11 References

- Adamson, P. and Bird, J.: The Mekong: A Drought-prone Tropical Environment? *International Journal of Water Resources Development*, 26, 579–594, <https://doi.org/10.1080/07900627.2010.519632>, 2010.
- 555 AghaKouchak, A., Farahmand, A., Melton, F. S., Teixeira, J., Anderson, M. C., Wardlow, B. D., and Hain, C. R.: Remote sensing of drought: Progress, challenges and opportunities, *Rev. Geophys.*, 53, 452–480, <https://doi.org/10.1002/2014RG000456>, 2015.
- AghaKouchak, A., Van Loon, A. F., Di Baldassarre, G., Breinl, K., Kuil, L., Garcia, M., Wanders, N., van Oel, P. R., Rangelcroft, S., and Veldkamp, T. I. E.: Water shortages worsened by reservoir effects, *Nat Sustain*, 1, 617–622, <https://doi.org/10.1038/s41893-018-0159-0>, 2018.
- 560 ANA: Portal HidroWeb, available at: <http://www.snirh.gov.br/hidrotelemetria/Mapa.aspx>, last access: 17 July 2019, 2019.
- Arino, O., Ramos Perez, J. J., Kalogirou, V., Bontemps, S., Defourny, P., and van Bogaert, E.: Global Land Cover Map for 2009 (GlobCover 2009), PANGAEA - Data Publisher for Earth & Environmental  
565 Science, <https://doi.org/10.1594/PANGAEA.787668>, 2012.
- AYA: Instituto Costarricense de Acueductos y Alcantarillados UEN de Gestión Ambiental Dirección de Estudios Básicos, available at: <https://www.aya.go.cr/SitePages/Principal.aspx>, last access: June 2019, 2019.
- Bachmair, S., Svensson, C., Hannaford, J., Barker, L. J., and Stahl, K.: A quantitative analysis to objectively appraise drought indicators and model drought impacts, *Hydrol. Earth Syst. Sci.*, 20, 2589–2609, <https://doi.org/10.5194/hess-20-2589-2016>, 2016.
- 570 Baez-Villanueva, O. M., Zambrano-Bigiarini, M., Ribbe, L., Nauditt, A., Giraldo-Osorio, J. D., and Thinh, N. X.: Temporal and spatial evaluation of satellite rainfall estimates over different regions in Latin-America, *Atmospheric Research*, 213, 34–50, <https://doi.org/10.1016/j.atmosres.2018.05.011>, 2018.
- 575 Baez-Villanueva, O. M., Zambrano-Bigiarini, M., Beck, H. E., McNamara, I., Ribbe, L., Nauditt, A., Birkel, C., Verbist, K., Giraldo-Osorio, J.D. & Thinh, N. X.: RF-MEP: A novel Random Forest method for merging gridded precipitation products and ground-based measurements. *Remote Sensing of Environment*, 239, 111606. <https://doi.org/10.1016/j.rse.2019.111606>, 2020.
- 580 Beck, H. E., van Dijk, A. I. J. M., Roo, A. de, Miralles, D. G., McVicar, T. R., Schellekens, J., and Bruijnzeel, L. A.: Global-scale regionalization of hydrologic model parameters, *Water Resour. Res.*, 52, 3599–3622, <https://doi.org/10.1002/2015WR018247>, 2016.
- Blauhut, V., Stahl, K., Stagge, J. H., Tallaksen, L. M., Stefano, L. de, and Vogt, J.: Estimating drought risk across Europe from reported drought impacts, drought indices, and vulnerability factors, *Hydrol. Earth Syst. Sci.*, 20, 2779–2800, <https://doi.org/10.5194/hess-20-2779-2016>, 2016.
- 585 Bocanegra, J. L.: Hydrological drought assessment in the Tempisque-Bebedero catchment system in Costa Rica, Master, available at: <https://epb.bibl.th-koeln.de/frontdoor/deliver/index/docId/1066/file/Thesis-Version+final-Bocanegra1.pdf>, 2017.
- Bui Du, D.: Full Technical Report: Climate Change Impacts to Water Safety in the Greater Mekong region: D422Lot1.SMHI.5.1.1B: Detailed workflows of each case-study on how to use the CDS for CII  
590 production and climate adaptation., available at: [https://climate.copernicus.eu/sites/default/files/2019-02/NAWAPI\\_Technical\\_report.pdf](https://climate.copernicus.eu/sites/default/files/2019-02/NAWAPI_Technical_report.pdf), 2018.



- Carrão, H., Naumann, G., and Barbosa, P.: Mapping global patterns of drought risk: An empirical framework based on sub-national estimates of hazard, exposure and vulnerability, *Global Environmental Change*, 39, 108–124, <https://doi.org/10.1016/j.gloenvcha.2016.04.012>, 2016.
- 595 CCAFS-SEA: CGIAR Research Program on Climate Change, Agriculture and Food Security- Southeast Asia: Assessment Report: The drought crisis in the Central Highlands of Vietnam., available at: [https://cgspace.cgiar.org/bitstream/handle/10568/75635/CGIAR%20ASSESSMENT%20REPORT\\_CentralH\\_June2.pdf](https://cgspace.cgiar.org/bitstream/handle/10568/75635/CGIAR%20ASSESSMENT%20REPORT_CentralH_June2.pdf).
- 600 CEIVAP: Sistema de Informações Geográficas e Geoambientais da Bacia Hidrográfica do Rio Paraíba do Sul, available at: <http://sigaceivap.org.br/saibaMais>, last access: 5 June 2019, 2015.
- CIESIN: Gridded Population of the World (GPWv4) SEDAC, Columbia University, population density. <http://doi.org/10.7927/H4NP22DQ>. <https://sedac.ciesin.columbia.edu/data/collection/gpw-v4>, last access: 27.10.2020, 1997-2020.
- 605 Constable, D.: The Sesan and Sre Pok River Basins, Bangkok, Thailand, 65 pp., available at: [http://www.iucn.org/about/union/secretariat/offices/asia/regional\\_activities/bridge\\_3s/](http://www.iucn.org/about/union/secretariat/offices/asia/regional_activities/bridge_3s/), last access: 7 December 2018, 2015.
- Dirección de Agua: Programa Integral del Abastecimiento de Agua, available at: [http://www.da.go.cr/wp-content/uploads/2018/04/Informe-Final\\_PIAAG-Version-Ditigal-Abril-2018.pdf](http://www.da.go.cr/wp-content/uploads/2018/04/Informe-Final_PIAAG-Version-Ditigal-Abril-2018.pdf), last access: April 2019, 2018.
- 610 Dutta, T., Sharma, S., McRae, B. H., Roy, P. S., and DeFries, R.: Connecting the dots: mapping habitat connectivity for tigers in central India, *Reg Environ Change*, 16, 53–67, <https://doi.org/10.1007/s10113-015-0877-z>, 2016.
- Erfanian, A., Wang, G., and Fomenko, L.: Unprecedented drought over tropical South America in 2016: significantly under-predicted by tropical SST, *Nature Scientific reports*, 7, 5811, <https://doi.org/10.1038/s41598-017-05373-2>.
- 615 FAO: Colombia: resilience programme 2017 - 2020, Rome, 24 pp., available at: <http://www.fao.org/3/a-i7584e.pdf>, last access: 27 June 2019, 2019.
- 620 Firoz, A. B. M., Nauditt, A., Fink, M., and Ribbe, L.: Quantifying human impacts on hydrological drought using a combined modelling approach in a tropical river basin in central Vietnam, *Hydrol. Earth Syst. Sci.*, 22, 547–565, <https://doi.org/10.5194/hess-22-547-2018>, 2018.
- Fischer, S. B., Pedraza Luengas, A., Schlüter, S., and Oliveira Antunes, L. A. (Eds.): From design to implementation: a participatory appraisal for silvopastoral systems.: In: Nehren U, Schlüter S, Raedig C, Sattler D, Hissa H (eds) *Strategies and tools for a sustainable rural Rio de Janeiro*. ISBN 978-3-319-89644-1, Springer Series on Environmental Management, Springer International Publishing, Cham, 2018.
- 625 Fleig, A. K., Tallaksen, L. M., Hisdal, H., and Demuth, S.: A global evaluation of streamflow drought characteristics, *Hydrol. Earth Syst. Sci.*, 10, 535–552, <https://doi.org/10.5194/hess-10-535-2006>, 2006.
- Fleig, A. K.: *Hydrological Drought – A comparative study using daily discharge series from around the world*, Diplomarbeit, Freiburg, available at: [http://www.hydrology.uni-freiburg.de/abschluss/Fleig\\_A\\_2004\\_DA.pdf](http://www.hydrology.uni-freiburg.de/abschluss/Fleig_A_2004_DA.pdf), last access: 20 May 2019, 2004.
- 630 Funk, C., Peterson, P., Landsfeld, M., Pedreros, D., Verdin, J., Shukla, S., Husak, G., Rowland, J., Harrison, L., Hoell, A., and Michaelsen, J.: The climate hazards infrared precipitation with stations--a





- new environmental record for monitoring extremes, *Scientific data*, 2, 150066, <https://doi.org/10.1038/sdata.2015.66>, 2015.
- 635 González Tánago, M., Bejarano, M. D., García de Jalón, D., and Schmidt, J. C.: Biogeomorphic responses to flow regulation and fine sediment supply in Mediterranean streams (the Guadalete River, southern Spain), *Journal of Hydrology*, 528, 751–762, <https://doi.org/10.1016/j.jhydrol.2015.06.065>, 2015.
- Gosling, S. N., Zaherpour, J., Mount, N. J., Hattermann, F. F., Dankers, R., Arheimer, B., Breuer, L., Ding, J., Haddeland, I., Kumar, R., Kundu, D., Liu, J., van Griensven, A., Veldkamp, T. I. E., Vetter, T., Wang, X., and Zhang, X.: A comparison of changes in river runoff from multiple global and catchment-scale hydrological models under global warming scenarios of 1 °C, 2 °C and 3 °C, *Climatic Change*, 141, 577–595, <https://doi.org/10.1007/s10584-016-1773-3>, 2017.
- 640 Hagenlocher, M., Meza, I., Anderson, C. C., Min, A., Renaud, F. G., Walz, Y., Siebert, S., and Sebesvari, Z.: Drought vulnerability and risk assessments: state of the art, persistent gaps, and research agenda, *Environ. Res. Lett.*, 14, 83002, <https://doi.org/10.1088/1748-9326/ab225d>, 2019.
- 645 Herrera, D. and Ault, T.: Insights from a New High-Resolution Drought Atlas for the Caribbean Spanning 1950–2016, *Journal of Climate*, 30, 7801–7825, <https://doi.org/10.1175/JCLI-D-16-0838.1>, 2017.
- Heydari, H., Valadan Zoej, M., Maghsoudi, Y., and Dehnavi, S.: An investigation of drought prediction using various remote-sensing vegetation indices for different time spans, *International Journal of Remote Sensing*, 39, 1871–1889, <https://doi.org/10.1080/01431161.2017.1416696>, 2018.
- 650 Hoyos, N., Correa-Metrio, A., Sisa, A., Ramos-Fabiel, M. A., Espinosa, J. M., Restrepo, J. C., and Escobar, J.: The environmental envelope of fires in the Colombian Caribbean, *Applied Geography*, 84, 42–54, <https://doi.org/10.1016/j.apgeog.2017.05.001>, 2017.
- ICE: Instituto Costarricense de Electricidad: Instituto de Hidrología, Costa Rica, available at: <https://www.grupoice.com/wps/portal>, last access: June 2019, 2019.
- 655 IDEAM: Observatorio del sistema de información del recurso hídrico: Sistema de Información Ambiental de Colombia, <http://sirh.ideam.gov.co:8230/Sirh/faces/observatorio.jspx>, last access: 4 May 2018, 2019.
- IDEAM, PNUD, Alcaldía de Bogotá, Gobernación de Cundinamarca, CAR, Corpoguavio, Instituto Alexander von Humboldt, Parques Nacionales Naturales de Colombia, MADS, and DNP: Estrategia regional de mitigación y adaptación al cambio climático para Bogotá y Cundinamarca. Plan Regional Integral de Cambio Climático para Bogotá Cundinamarca (PRICC), available at: [http://www.ideam.gov.co/documents/40860/609198/Policy+paper\\_07\\_Mitigaci%C3%B3n+y+adaptaci%C3%B3n+al+cambio+clim%C3%A1tico.pdf](http://www.ideam.gov.co/documents/40860/609198/Policy+paper_07_Mitigaci%C3%B3n+y+adaptaci%C3%B3n+al+cambio+clim%C3%A1tico.pdf), last access: January 2019, 2014.
- 660 Kallio, M., Guillaume, J. H. A., Virkki, V., Kumm, M., and VIRRANTAU, K.: Hydrostreamer v1.0 - improved streamflow predictions for local applications from an ensemble of downscaled global runoff products. Discussion Paper Geoscientific Model Development, doi [10.5194/gmd-2020-276](https://doi.org/10.5194/gmd-2020-276). 2020.
- 665 Kallio, M.: Vignette Hydrostreamer, available at: <https://github.com/mkkallio/hydrostreamer/tree/master/vignettes>, 2020.
- 670 Kallio, M., Virkki, V., Guillaume, J. H. A., and van Dijk, A. I. J. M.: Downscaling runoff products using areal interpolation: a combined pycnophylactic-dasymetric method, in El Sawah, S. (ed.) MODSIM2019: 23rd International Congress on Modelling and Simulation, <https://doi.org/10.36334/modsim.2019.K8.kallio>, available at: [https://research.aalto.fi/files/39776673/kallio\\_et\\_al\\_MODSIM\\_2019.pdf](https://research.aalto.fi/files/39776673/kallio_et_al_MODSIM_2019.pdf), 2019.



- 675 Kallio, M., Guillaume, J. H. A., Kummu, M., and Virrantaus, K.: Generating improved estimates of streamflow using model averaging of downscaled runoff products under uncertainty, <https://doi.org/10.13140/RG.2.2.33813.78562>, 2018.
- Kogan, F. N.: Application of vegetation index and brightness temperature for drought detection, *Advances in Space Research*, 15, 91–100, [https://doi.org/10.1016/0273-1177\(95\)00079-T](https://doi.org/10.1016/0273-1177(95)00079-T), 1995.
- 680 Kummu, M., Taka, M., and Guillaume, J. H. A.: Gridded global datasets for Gross Domestic Product and Human Development Index over 1990–2015, *Nature Scientific data*, 5, 180004, <https://doi.org/10.1038/sdata.2018.4>, 2018.
- Mariano, D. A., Santos, C. A.C. d., Wardlow, B. D., Anderson, M. C., Schiltmeyer, A. V., Tadesse, T., and Svoboda, M. D.: Use of remote sensing indicators to assess effects of drought and human-induced land degradation on ecosystem health in Northeastern Brazil, *Remote Sensing of Environment*, 213, 129–143, <https://doi.org/10.1016/j.rse.2018.04.048>, 2018.
- 685 McKee, T. B., Nolan, D. J., and Kleist, J.: The Relationship of drought frequency and duration to time scale, available at: <https://climate.colostate.edu/pdfs/relationshipofdroughtfrequency.pdf>, 1993.
- Meza, I., Hagenlocher, M., Naumann, G., Vogt, J., and Frischen, J.: Drought vulnerability indicators for global-scale drought risk assessments: Global expert survey results report, JRC technical reports, Publications Office of the European Union, Luxembourg, 62 pp., available at: [https://collections.unu.edu/eserv/UNU:7430/Meza\\_etal\\_2019\\_DroughtVulnerability\\_META.pdf](https://collections.unu.edu/eserv/UNU:7430/Meza_etal_2019_DroughtVulnerability_META.pdf), 2019. MRC: Data and Information Services, available at: <https://portal.mrcmekong.org/home>, last access: 1 March 2019, 2018.
- 690 Muñoz Jiménez, R., Giraldo Osorio, J. D., Brenes Torres, A., Avendaño Flores, I., Nauditt, A., Hidalgo León, H. G., and Birkel, C.: Spatial and temporal patterns, trends and teleconnection of cumulative rainfall deficits across Central America, *Int J Climatol*, 39, 1940–1953, <https://doi.org/10.1002/joc.5925>, 2019.
- Nauditt, A., Hann, H.: Formiga, R., Ribbe, L.: Avaliação do risco de seca em uma bacia hidrográfica rural com escassez de dados: o caso da sub-bacia do rio Muriaé. In: Filho, A. et al (Eds): *Adapta Gestão Adaptativa do Risco Climático de Seca*, UFC book series., available at: [http://www.adapta.ufc.br/livro\\_adapta.pdf](http://www.adapta.ufc.br/livro_adapta.pdf), 2019a.
- 700 Nauditt, A.; Firoz, ABM; Viet, T. Q.; Fink, M.; Stolpe, H.; and Ribbe, L. 2017. Hydrological drought risk assessment in an anthropogenically impacted tropical catchment, in: *Land Use and Climate Change Interactions in Central Vietnam: LUCCi*, Nauditt, A., and Ribbe, L. (Eds.), Springer Book Series: Water Resources and Development, ISBN 978-981-10-2623-2. 2017.
- 705 Nauditt, A., Metzke, D., Thurner, J., Ribbe, L., Formiga-Johnsson, R. M., and de Paula Marques, A. L.: A grande seca de 2014–2015 Na Bacia Do Rio Paraíba Do Sul: Compreendendo As Características Espaciais E Temporais De Seca E Escassez Hídrica. In: Filho, A. Et Al (Eds): *Adapta Gestão Adaptativa Do Risco Climático De Seca*, Ufc Book Series., available at: [http://www.adapta.ufc.br/livro\\_adapta.pdf](http://www.adapta.ufc.br/livro_adapta.pdf), 2019b.
- 710 Naumann, G., Barbosa, P., Garrote, L., Iglesias, A., Vogt, J.: Exploring drought vulnerability in Africa: an indicator based analysis to be used in early warning systems. *Hydrol. Earth Syst. Sci.* 18, 1591–1604, 2014.



- 715 Naumann, G., Alfieri, L., Wyser, K., Mentaschi, L., Betts, R. A., Carrao, H., Spinoni, J., Vogt, J., and Feyen, L.: Global Changes in Drought Conditions Under Different Levels of Warming, *Geophys. Res. Lett.*, 45, 3285–3296, <https://doi.org/10.1002/2017GL076521>, 2018.
- Naumann, G., Vargas, W., Barbosa, P., Blauhut, V., Spinoni, J., and Vogt, J.: Dynamics of Socioeconomic Exposure, Vulnerability and Impacts of Recent Droughts in Argentina, *Geosciences*, 9, 39, <https://doi.org/10.3390/geosciences9010039>, 2019.
- 720 Neitsch, S. L., Arnold, J. G., Kiniry, J. R., and Williams, J. R.: Soil and Water Assessment Tool Theoretical Documentation Version 2009.: Texas (Texas Water Resources Institute Technical Report, 406), available at: <https://swat.tamu.edu/media/99192/swat2009-theory.pdf>, 2011.
- Peel, M. C., Finlayson, B. L., and McMahon, T. A.: Updated world map of the Köppen-Geiger climate classification, *Hydrol. Earth Syst. Sci.*, 11, 1633–1644, <https://doi.org/10.5194/hess-11-1633-2007>, 2007.
- 725 Pinzon, J. and Tucker, C.: A Non-Stationary 1981–2012 AVHRR NDVI3g Time Series, *Remote Sensing*, 6, 6929–6960, <https://doi.org/10.3390/rs6086929>, 2014.
- Quiring, S. M. and Ganesh, S.: Evaluating the utility of the Vegetation Condition Index (VCI) for monitoring meteorological drought in Texas, *Agricultural and Forest Meteorology*, 150, 330–339, <https://doi.org/10.1016/j.agrformet.2009.11.015>, 2010.
- 730 Ramankutty, N., Evan, A. T., Monfreda, C., and Foley, J. A.: Farming the planet: 1. Geographic distribution of global agricultural lands in the year 2000, *Global Biogeochem. Cycles*, 22, n/a-n/a, <https://doi.org/10.1029/2007GB002952>, 2008.
- 735 Recuero, L., Litago, J., Pinzón, J. E., Huesca, M., Moyano, M. C., and Palacios-Orueta, A.: Mapping Periodic Patterns of Global Vegetation Based on Spectral Analysis of NDVI Time Series, *Remote Sensing*, 11, 2497, <https://doi.org/10.3390/rs11212497>, 2019.
- Ribbe, L., Formiga-Johnsson, R. M., and Ramirez Duval, J. L.: Water Security in Rio de Janeiro State, In: Nehren U, Schlüter S, Raedig C, Sattler D, Hissa H (eds) *Strategies and tools for a sustainable rural Rio de Janeiro*. L. A., Springer International Publishing, Cham, 223–236, ISBN 978-3-319-89644-1, [https://doi.org/10.1007/978-3-319-89644-1\\_15](https://doi.org/10.1007/978-3-319-89644-1_15), 2018.
- 740 Robinson, T. P., Wint, G. R. W., Conchedda, G., van Boeckel, T. P., Ercoli, V., Palamara, E., Cinardi, G., D'Aiotti, L., Hay, S. I., and Gilbert, M.: Mapping the global distribution of livestock, *PLoS one*, 9, e96084, <https://doi.org/10.1371/journal.pone.0096084>, 2014.
- 745 Rodríguez, E., Sánchez, I., Duque, N., Arboleda, P., Vega, C., Zamora, D., López, P., Kaune, A., Werner, M., García, C., and Burke, S.: Combined Use of Local and Global Hydro Meteorological Data with Hydrological Models for Water Resources Management in the Magdalena - Cauca Macro Basin – Colombia, *Water Resour Manage*, 34, 2179–2199, <https://doi.org/10.1007/s11269-019-02236-5>, 2020.
- Samaniego, L., Thober, S., Kumar, R., Wanders, N., Rakovec, O., Pan, M., Zink, M., Sheffield, J., Wood, E. F., and Marx, A.: Anthropogenic warming exacerbates European soil moisture droughts, *Nature Clim Change*, 8, 421–426, <https://doi.org/10.1038/s41558-018-0138-5>, 2018.
- 750 Sheffield, J., Wood, E. F., Pan, M., Beck, H., Coccia, G., Serrat-Capdevila, A., and Verbist, K.: Satellite Remote Sensing for Water Resources Management: Potential for Supporting Sustainable Development in Data-Poor Regions, *Water Resour. Res.*, 54, 9724–9758, <https://doi.org/10.1029/2017WR022437>, 2018.



View publication stats

- 755 Stahl, K. and Hisdal, H.: Hydroclimatology, 2004 in Tallaksen, L.M. and Van Lanen, H.A.J. (Eds.)  
Hydrological Drought., 2004. Developments in water science, 48, Elsevier, Amsterdam, 579 pp., 2004.
- 760 Stahl, K., Kohn, I., Blauhut, V., Urquijo, J., De Stefano, L., Acácio, V., Dias, S., Stagge, J. H., Tallaksen, L.  
M., Kampragou, E., Van Loon, A. F., Barker, L. J., Melsen, L. A., Bifulco, C., Musolino, D., de Carli, A.,  
Massarutto, A., Assimacopoulos, D., and Van Lanen, H. A. J.: Impacts of European drought events:  
insights from an international database of text-based reports, *Nat. Hazards Earth Syst. Sci.*, 16, 801–  
819, <https://doi.org/10.5194/nhess-16-801-2016>, 2016.
- Thirumalai, K., DiNezio, P. N., Okumura, Y., and Deser, C.: Extreme temperatures in Southeast Asia  
caused by El Niño and worsened by global warming, *Nature Communications*, 8, 15531,  
<https://doi.org/10.1038/ncomms15531>, 2017.
- 765 Thomas, A. C., Reager, J. T., Famiglietti, J. S., and Rodell, M.: A GRACE-based water storage deficit  
approach for hydrological drought characterization, *Geophys. Res. Lett.*, 41, 1537–1545,  
<https://doi.org/10.1002/2014GL059323>, 2014.
- Tijdeman, E. and Menzel, L.: Controls on the development and persistence of soil moisture drought across  
Southwestern Germany, HESS preprint, <https://doi.org/10.5194/hess-2020-307>, 2020.
- 770 UNGRD, IDEAM, MinAmbiente, Cancillería de Colombia, and United Nations: Estrategia Nacional para la  
Gestión Integral de la Sequía en Colombia, available at:  
[https://www.unisdr.org/files/11541\\_DroughtRiskReduction2009library.pdf](https://www.unisdr.org/files/11541_DroughtRiskReduction2009library.pdf), 2018.
- UN-ISDR: Drought Risk Reduction, Framework and Practices: Contributing to the Implementation of the  
Hyogo Framework of Action, Geneva, 214 pp., available at:  
[https://www.unisdr.org/files/11541\\_DroughtRiskReduction2009library.pdf](https://www.unisdr.org/files/11541_DroughtRiskReduction2009library.pdf), last access: 28 July 2019,  
2009.
- 775 Vega-Viviescas, C. and Rodriguez, E. A.: Evaluation of reanalysis data in the study of meteorological and  
hydrological droughts in the Magdalena-Cauca river basin, Colombia, *Dyna (Medellin, Colombia)*, 86,  
268–277, available at:  
[https://www.researchgate.net/publication/338456293\\_Evaluation\\_of\\_reanalysis\\_data\\_in\\_the\\_study\\_of\\_](https://www.researchgate.net/publication/338456293_Evaluation_of_reanalysis_data_in_the_study_of_meteorological_and_hydrological_droughts_in_the_Magdalena-Cauca_river_basin_Colombia)  
780 [meteorological\\_and\\_hydrological\\_droughts\\_in\\_the\\_Magdalena-Cauca\\_river\\_basin\\_Colombia](https://www.researchgate.net/publication/338456293_Evaluation_of_reanalysis_data_in_the_study_of_meteorological_and_hydrological_droughts_in_the_Magdalena-Cauca_river_basin_Colombia), 2019.
- Venegas-Cordero, N., Birkel, C., Giraldo-Osorio, J. D., Correa-Barahona, A., Duran-Quesada, A. M., Arce-  
Mesen, R., and Nauditt, A.: Can hydrological drought be efficiently predicted by conceptual rainfall-  
runoff models with global data products?: Accepted and under review at *Journal of Natural Resources*  
and Development, 2020.
- 785 Vogt, J.V., Naumann, G., Masante, D., Spinoni, J., Cammalleri, C., Erian, W., Pischke, F., Pulwarty, R.,  
Barbosa, P., Drought Risk Assessment. A conceptual Framework. EUR 29464 EN, Publications Office  
of the European Union, Luxembourg, 2018. ISBN 978-92-79-97469-4, doi:10.2760/057223,  
JRC113937, 2018.
- 790 WMO: Manual on Low-flow – Estimation and Prediction: Operational Hydrology Report No. 50, Geneva,  
138 pp., available at: [https://www.wmo.int/pages/prog/hwrrp/publications/low-](https://www.wmo.int/pages/prog/hwrrp/publications/low-flow_estimation_prediction/WMO%201029%20en.pdf)  
[flow\\_estimation\\_prediction/WMO%201029%20en.pdf](https://www.wmo.int/pages/prog/hwrrp/publications/low-flow_estimation_prediction/WMO%201029%20en.pdf), last access: July 2019, 2008.